

“ZAK – World of Windows”

20th September 13

**Presentation by
Edifice Consultants Pvt. Ltd.**



About us : A Snap shot

Snap shot....

Established in **1987**

Located at **7** cities across India

200 + resources on board

13 directors & **55** associates

Our Vision

Our Designs Will **Be Sensitive To The Context , Client , Environment and Business Processes** And We Will Be Proud Of Every Project That We **Deliver**

Our Values :

Edifice holds six core values at the centre of its work ethic

Integrity

Ownership

Competence

Creativity

People

Planet

at a glance

1987 – Corporate & Residential Interiors
1994 – Large Commercial and IT Interiors
1997 – Commercial & IT/ ITES buildings
2000 – Campuses
2002 - Retail
2003 – Large-scale Campuses
2006 – Hospitals, Hotels & Education
2007 -- Residential
2008 -- Industrial Design
2009 --Urban Design
2010 --Science and Technology

Today, with an experience of over 800 projects ECPL has a presence in the following sectors:

Commercial
IT/ ITES
Retail
Urban Design , Master Planning
Residential
Hospitality
Health Care
Science & Technology and Manufacturing.

Presentation Structure :

Part-1: Design Criteria
/factors considered in selecting
Window solutions.

Part-2: References from our own
work (Built/ un Built) , wherein we
have tried to go towards " **Out of
the Box Thinking** " in providing
window/door solutions.

Part 3: Conclusion with Q&A.

Part-1: Design Criteria /factors considered in selecting Window solutions:

- Framing views

Creating an out side Inside experience.

- Climatic conditions

Protection from Heat, water , wind and correct climatic provisions.

- Articulating Fenestration

Respecting the Architectural language and Theme.

- Accentuating Scale

Using the Window module as a Element.

- Creating openness

How can a door and Window make a small space look big?

- Modular Planning

Respecting a Module of the façade.

- Safety considerations

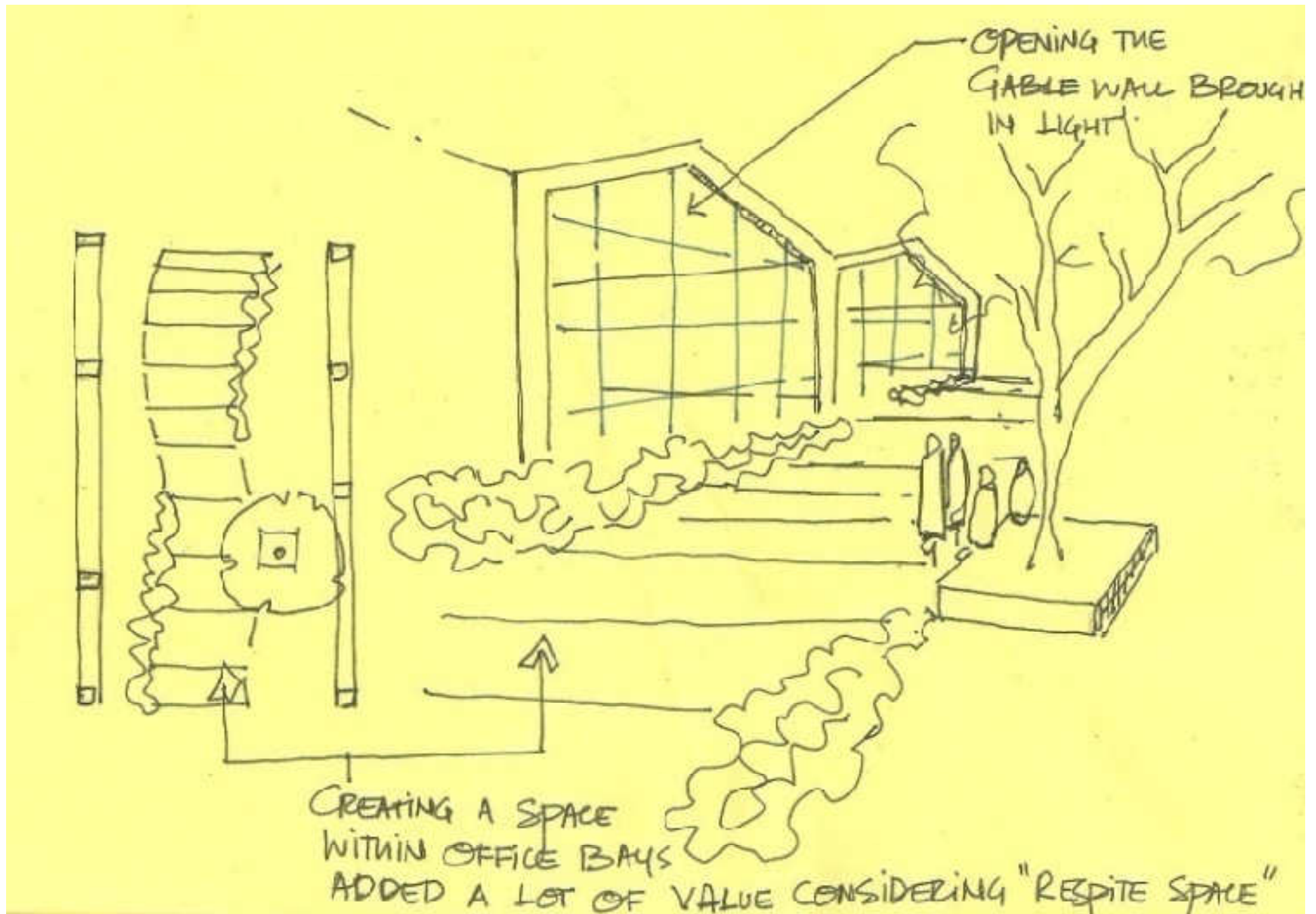
Fire earthquake, Bomb blast , etc.

Part-2: References from our own work
(Built/ un Built) , wherein we have tried to
go towards " **Out of the Box Thinking** " , in
providing window/door solutions.

*We have shortlisted some of our best
works hereafter **as per the criteria**
Explained.....*

Framing Views:

Creating an outside Inside experience...





This Project was featured in the CNN Emerging India Series.



Evidence mapping Indicated that the spatial effect contributed to 15% increase in efficiency.



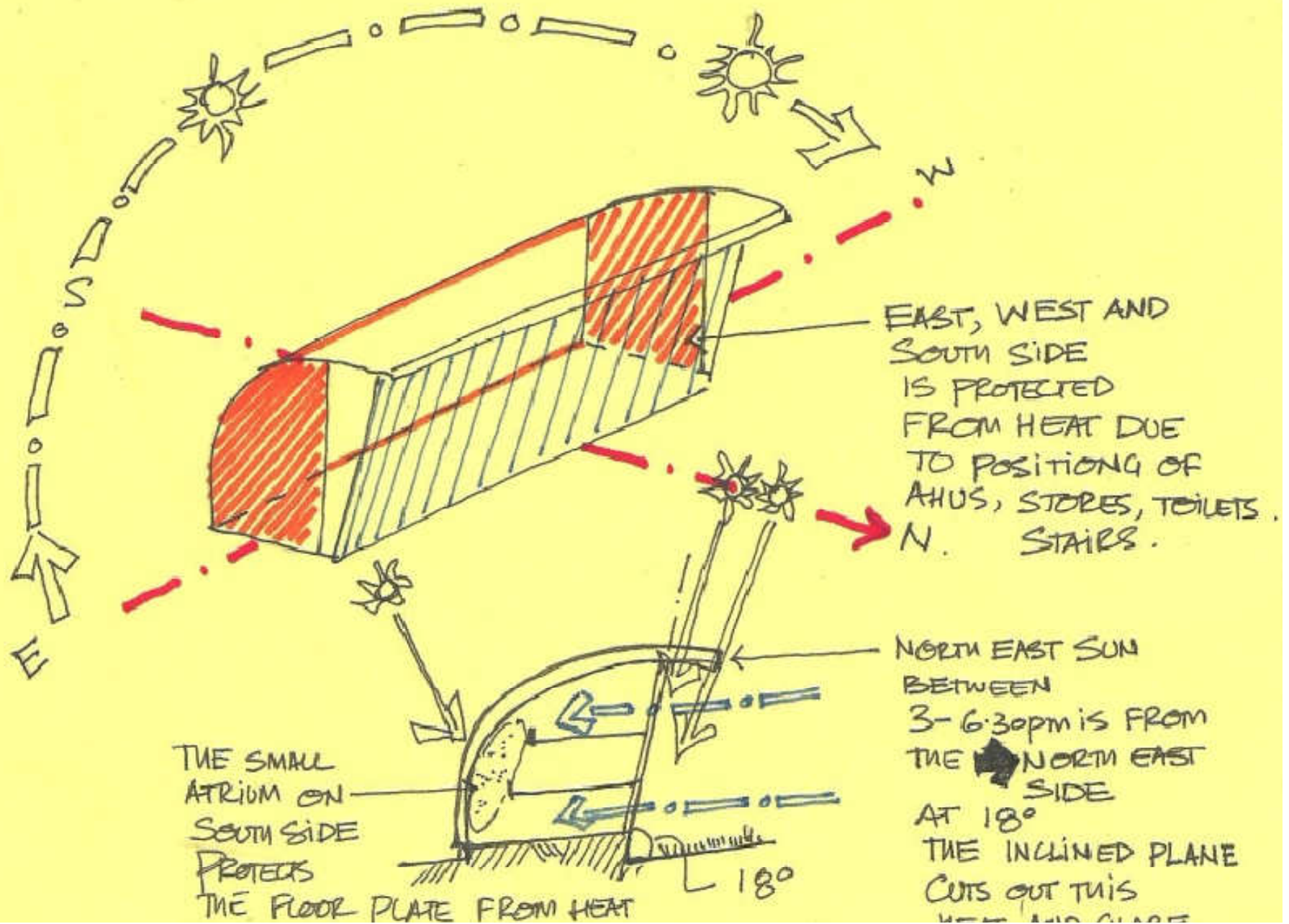
"Inside talking to the outside"



Lounge spaces that are cool and calm!

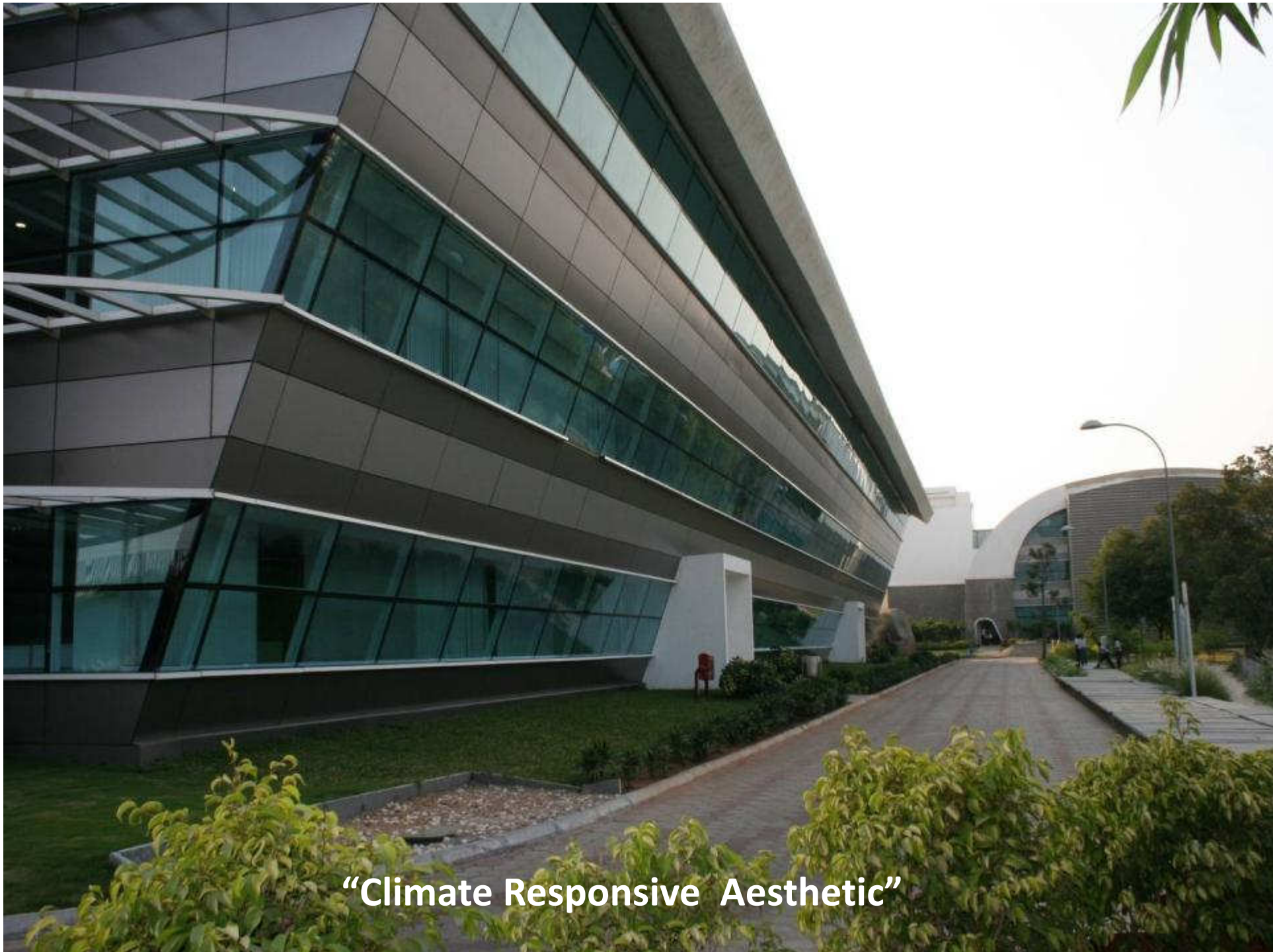
Responding to Climate:

Protection from Heat, water , wind and correct climatic provisions...





Northern Side exposed to the best view



“Climate Responsive Aesthetic”



- Rich, good-quality, diffused natural light within work and common areas.
- Extremely energy efficient campus. Air conditioning load as less as **1 TR per 440 sft** as against **180-225sft** in most other facilities.





The Subtly modeled North Facade represents the Power , prominence and Strength...



The South Facade is response to the local climate...

Articulating to Fenestration:

Respecting the Architectural language and Theme...



Articulating fenestration: **Innovation : “Using Fractal Geometry”**

EDIFICE



Skin used as the structure avoids columns in the office bays give maximum flexibility , **for over 4-5 uses** , also the centre core gives Earthquake resistance.

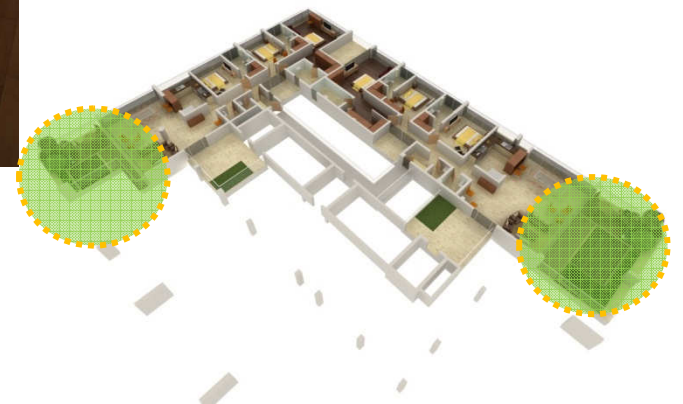
“ Structure as the Exterior Expression”



“ Giving architectural Character”



Creating a feeling of space



Indulgence

Exclusive

Abundance

pleasure

Excess

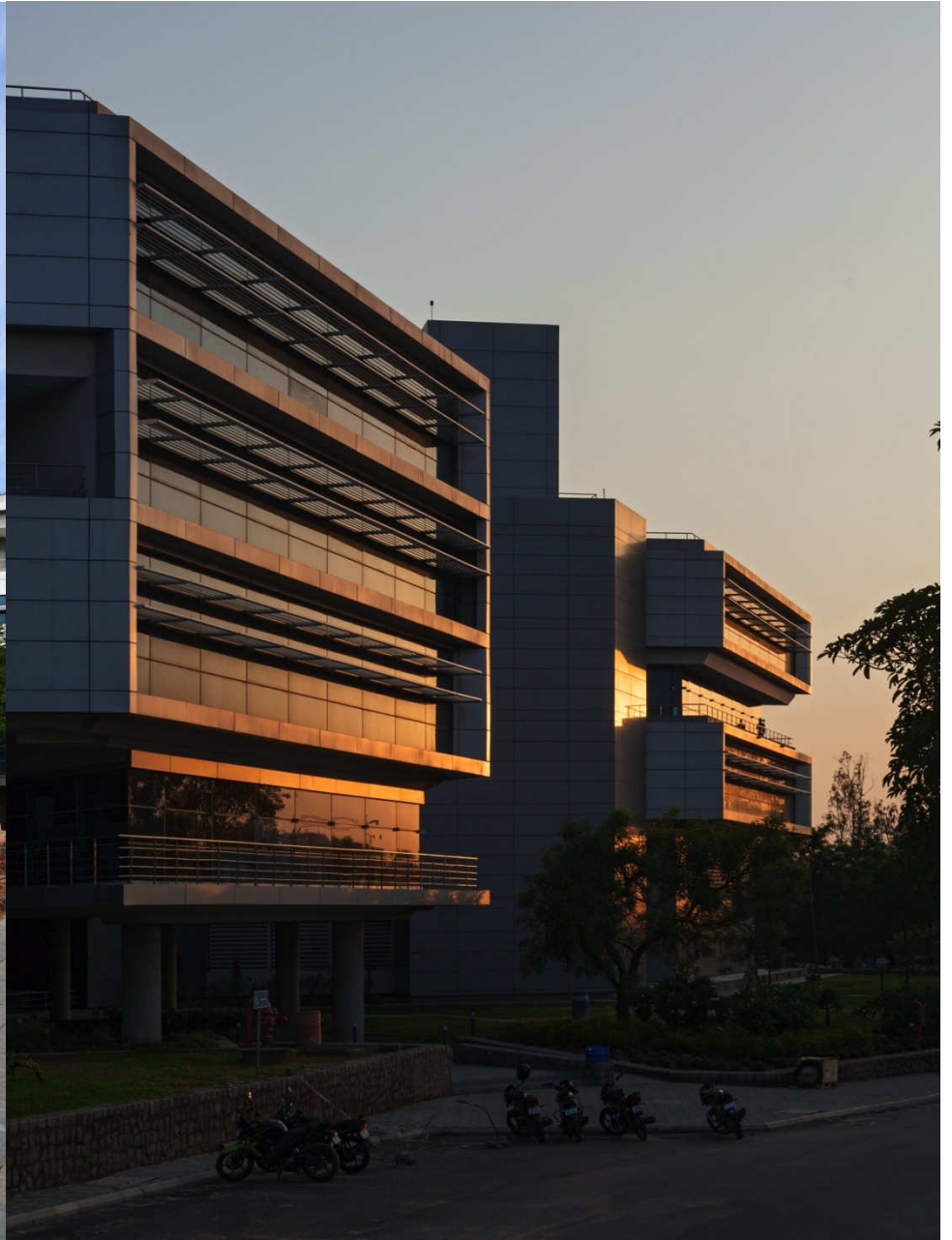
EDIFICE







Articulating form using a Linear window module....



Accentuating scale...

Using the Window module as a Element.....

Sky Deck as a cloud thus accentuating the form...





Window height used to accentuate height ...



Strip Windows used to accentuate length of the Built form...

Creating openness:

How can a door and Window make a small space look big?



Creating openness by transparent partition/ window panels ...



Being part of a Module

Respecting a Module of the facade....



The Stone Panels sized used as an Elevation grid ...



•Safety considerations

Fire earthquake, Bomb blast , etc.



**Balancing safety considerations,
behavioral patterns and
aesthetics....**



Framing external views in many ways reduces the psychological feeling that one is sick and in many ways **helps respond to the Circadian rhythm** in tropical countries.



"It takes a little bit more effort to be sensitive"

Thank You....



